



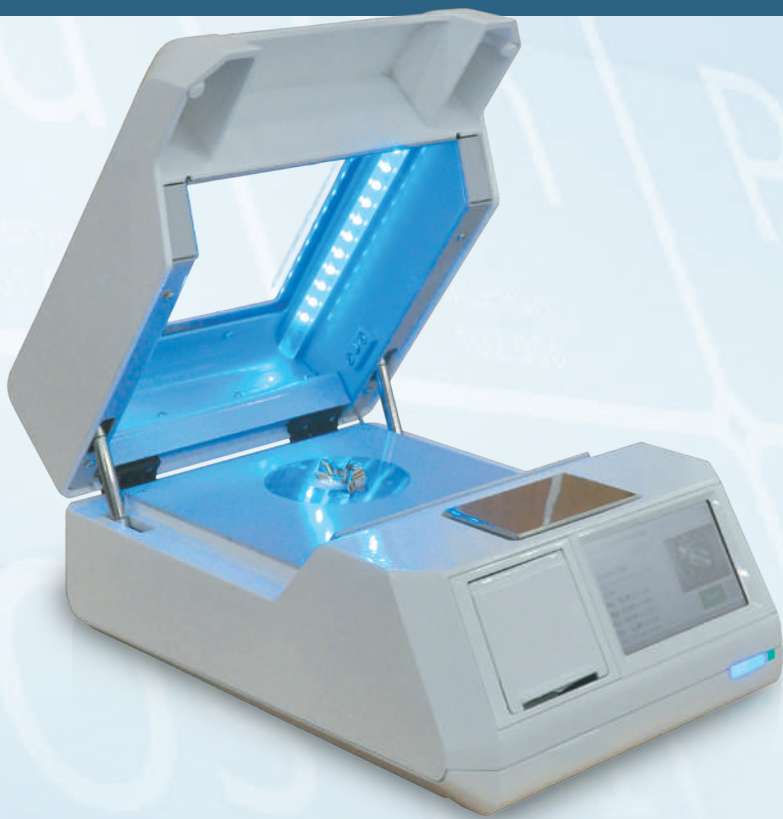
Advanced XRF equipment and solutions

ElvaX

Jewelry Lab

Designed for high-accuracy analysis of precious metals and jewelry.

X-ray fluorescence analysis surpasses the rest of analytical methods in terms of speed, accuracy, and simplicity.



High speed and accuracy

Intuitive interface

Autonomous operation as well as connected to a PC

Coatings detection

Compact, doesn't take much space on a desk or a counter

Leaded glass to keep analyzed items always in sight

Customer display



Analysis accuracy of precious metals and jewelry is better than 0,1%



Integrated computer, high-accuracy scales, printer and a rechargeable Li-ion battery



The whole measurement process takes only several seconds

Precious Alloys

5/27/2013, 1:19 PM

585-7

14.0K Gold

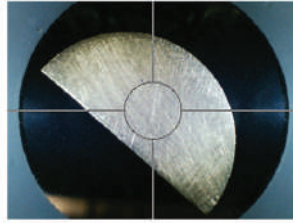
Plating not detected

3.27 g

Au: $58.51 \pm 0.04\%$

Cu: $33.31 \pm 0.04\%$

Ag: $8.18 \pm 0.03\%$



Analysis accuracy of precious metals and jewelry is better than 0,1%. You get full information about the jewelry item including a plating presence

With integrated camera and collimators You can easy select the analyzed spot size and position the sample.



X-ray tube

Anode: Ag

Wattage: 4W

Voltage: 40kV

X-ray Detector

Type: Fast SDD

Area: 25 mm²

Energy resolution: 140 eV at Mn K α , 90 eV at Al K α

Count rate: 500 000 cps

Electronics

Signal processor: Digital pulse processor based on 80 MHz DSP

ADC: 4096 channels

Common

Analytical Chamber Dimensions: 185 mm × 212 mm × 90 mm

Weight: 7 kg

Power supply: 90 – 240 V, 50/60 Hz; optional battery

Power consumption: 20 W

Embedded PC

Operating system: Windows © Compact

Analysis algorithms: Regression algorithm, Manual spectra comparison

Data transfer: 2×USB, MicroSD, miniUSB

Screen: 5", 800×480

Elvatech Ltd.

50 Mashynobudivna str., Kyiv 03680, Ukraine

Phone: (+380 44) 599-11-43, Fax: (+380 44) 406-65-83

office@elvatech.com

www.elvatech.com