

# ElvaX S Lab

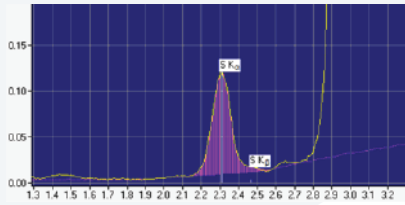
ElvaX S Lab is designed especially for analysis of petrochemicals for sulfur content in wide concentration range.



Due to low detection limits (down to ppm level) and minimal required sample preparation ElvaX S Lab is an ideal tool for analysis of sulfur in petrochemicals.

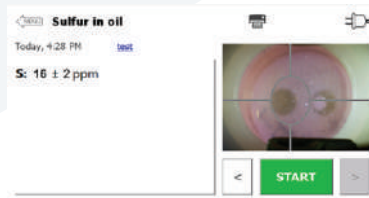
Many international standards describe analysis method for sulfur in fuel and oil. Sulfur forms damaging sulfates in vehicle exhaust and pollute the atmosphere by sulfur oxides.

Furthermore sulfur reduces fuel stability and effects on engine performance. Maximum permissible level of sulfur in fuel decreases from year to year.



## Lowest detection limit

Unique configuration of x-ray tube and geometry designed for best sensitivity to sulfur.  
Limit of detection is only 2 ppm!



## Fast analysis

Sample preparation is not required for analysis of petrochemicals. Result will be obtained after one minute.



## One instrument for any sample

Analysis of gasoline, oils, lubricating, diesel, crude oil and any other petrochemicals using one instrument. No additional calibration is needed.



## ASTM D4294 and ISO 8754

2003/17/EC (or EURO VI) directive requires a maximum amount of sulfur in fuel of 10 ppm. ElvaX S fully meets the requirements of ASTM D4294, ISO 8754.

### X-ray tube

Anode: Ag  
Wattage: 4W  
Voltage: 40kV

### X-ray Detector

Type: Fast SDD  
Area: 25 mm<sup>2</sup>  
Energy resolution: 140 eV at Mn K $\alpha$ , 90 eV at Al K $\alpha$   
Count rate: 500 000 cps

### Electronics

Signal processor: Digital pulse processor based on 80 MHz DSP  
ADC: 4096 channels

### Common

Analytical Chamber Dimensions: 185 mm × 212 mm × 90 mm  
Weight: 7 kg  
Power supply: 90 – 240 V, 50/60 Hz; optional battery  
Power consumption: 20 W

### Embedded PC

Operating system: Windows © Compact  
Analysis algorithms: Regression algorithm, Manual spectra comparison  
Data transfer: 2×USB, MicroSD, miniUSB  
Screen: 5", 800×480

Elvatech Ltd.

50 Mashinobudivna str., Kyiv 03680, Ukraine

Phone: (+380 44) 599-11-43, Fayu (+380 44) 406-65-83

office@elvatech.com

www.elvatech.com